



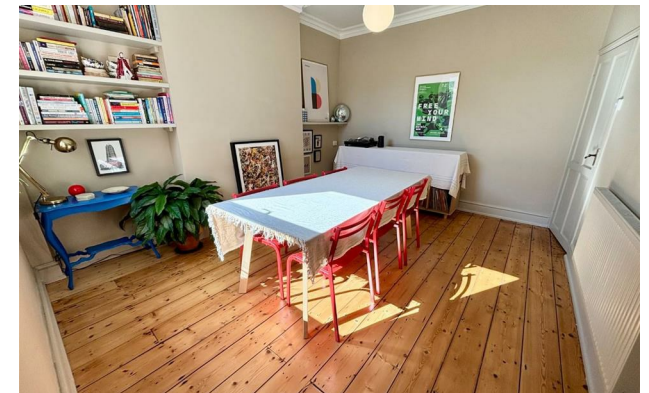
jordan fishwick

NORTHENDEN
Lingard Road



Lingard Road, Northenden, M22 4EW

Guide Price £350,000



The Property

An impressive 1184 sq ft LARGER THAN AVERAGE SEMI DETACHED property, beautifully presented & NEWLY REDECORATED living SPACES THROUGHOUT. MANY ORIGINAL FEATURES, INCLUDING CORNICING AND STRIPPED FLOORBOARDS. NEWLY CARPETED UPSTAIRS & BOASTING TWO LARGE DOUBLE BEDROOMS, TWO RECEPTION ROOMS, A useful BASEMENT, PRETTY SOUTH FACING PRIVATE courtyard garden ALL IN a sought after location. NORTHENDEN VILLAGE AND ALL THE AMENITIES A STONES THROW AWAY & CLOSE TO DIDSBURY. In outline:- Entrance hall, lounge, separate dining room and recently fitted kitchen with new large glass door opening to the rear pretty courtyard on the ground floor. the first floor landing giving way to two excellent large double bedrooms and the bathroom with white suite. * No Chain * VIEWING HIGHLY RECOMMEND

Directions

M22 4EW



- Larger than average Impressive semi detached house
- New fully fitted kitchen with all integrated appliances
- Beautifully presented throughout
- Two large double bedrooms
- Lounge with working fireplace & large separate dining room
- Generous fully fitted bathroom
- New double glazing & outdoor lighting
- Gas central heating & large Useful basement
- South facing courtyard garden, backing onto school grounds
- Sought after central Northenden location

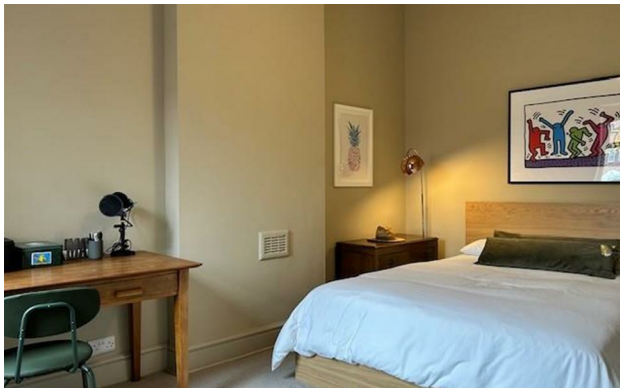
Postcode - M22 4EW

EPC Rating - D

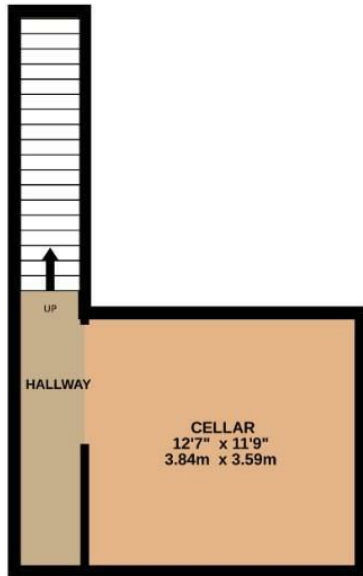
Floor Area - 1184.00 sq ft

Local Authority - Manchester City Council

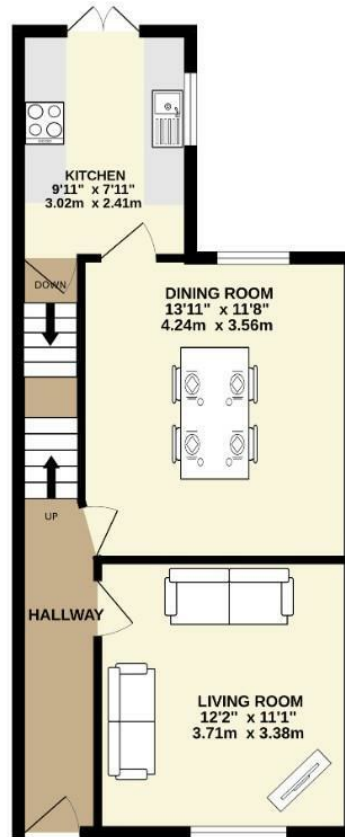
Council Tax - C



BASEMENT
230 sq.ft. (21.4 sq.m.) approx.



GROUND FLOOR
477 sq.ft. (44.3 sq.m.) approx.



FIRST FLOOR
477 sq.ft. (44.3 sq.m.) approx.



TOTAL FLOOR AREA : 1184 sq.ft. (110.0 sq.m.) approx.
Measurements are approximate. Not to scale. Illustrative purposes only
Made with Metropix ©2025



These particulars are believed to be accurate but they are not guaranteed and do not form a contract. Neither Jordan Fishwick nor the vendor or lessor accept any responsibility in respect of these particulars, which are not intended to be statements or representations of fact and any intending purchaser or lessee must satisfy himself by inspection or otherwise as to the correctness of each of the statements contained in these particulars. Any floorplans on this brochure are for illustrative purposes only and are not necessarily to scale.

Offices also at: Wilmslow, Macclesfield, Hale, Sale, Chorlton, Glossop, Manchester & Salford

757-759 Wilmslow Road, Didsbury Village, Manchester

0161 445 4480

didsbury@jordanfishwick.co.uk
www.jordanfishwick.co.uk